

B

BizSync360

Enterprise Asset Management Software

Synchronize. Optimize. Accelerate.

A comprehensive, cloud-ready EAM platform designed to give organizations complete visibility, control, and intelligence over their entire asset lifecycle — from acquisition to disposal.

+ 20+ Integrated Modules

+ AI-Powered Analytics

+ IoT & RFID Integration

+ Predictive Maintenance

+ Multi-Tenant Architecture

+ ERP Integration Ready

+ Mobile-First Design (PWA)

+ SLA & Compliance Tracking

+ Barcode & QR Scanning

+ Financial Depreciation

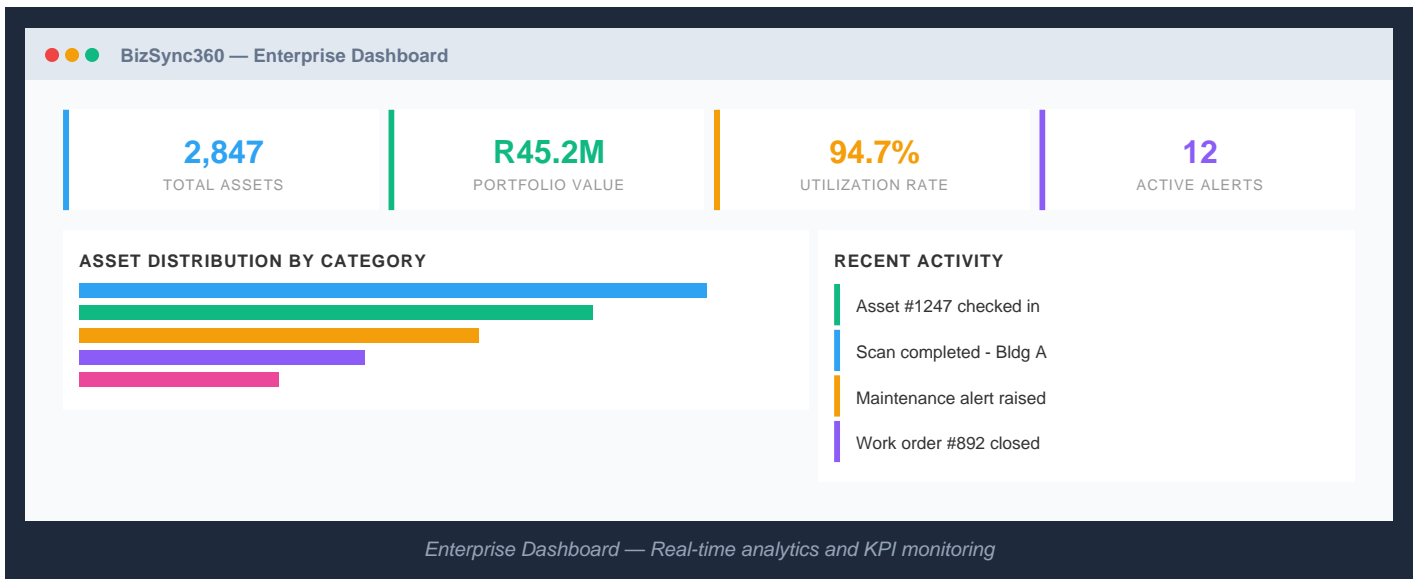
+ Storage Tank Monitoring

+ Advanced Reports & Export

Your Complete Asset Management Command Center

BizSync360 is an enterprise-grade asset management platform built on modern Symfony architecture. It delivers real-time visibility across your entire asset portfolio with intelligent dashboards, automated workflows, and predictive insights that transform how organizations manage their assets.

20+ MODULES	360 ASSET VISIBILITY	99.9% UPTIME SLA	24/7 IOT MONITORING
-----------------------	--------------------------------	----------------------------	-------------------------------



Why BizSync360?

Unlike traditional EAM systems, BizSync360 combines AI-driven predictive maintenance, IoT sensor integration, RFID tracking, and advanced analytics in a single unified platform. Purpose-built for enterprises managing thousands of assets across multiple sites and locations.

Asset Management & Tracking

Asset Registry & Lifecycle Management

Complete asset lifecycle tracking from acquisition to disposal. Manage asset details, locations, custody transfers, cost centers, and full asset history with barcode and QR code generation.

- Asset Registration
- Barcode/QR Codes
- Custody Tracking
- Location Management
- Cost Centers
- Asset Types
- Documents

● ● ● BizSync360 — Asset Register

Asset ID	Description	Category	Location	Value	Status
AST-001247	Generator Set 500KVA	Equipment	Plant Room A	R 2,450,000	Active
AST-001248	HVAC Central Unit	Infrastructure	Building B - Roof	R 890,000	Maintenance
AST-001249	Dell Server R740	IT Equipment	Data Center	R 185,000	Active
AST-001250	Forklift CAT DP25N	Vehicles	Warehouse C	R 420,000	In Use

Asset Register — Full asset inventory with search, filter, and batch operations

Barcode & QR Scanning

Mobile-ready barcode and QR code scanning for rapid asset identification, verification, and quick capture in the field. Generate and print barcodes for all registered assets.

- QR Code Scanning
- Barcode Generation
- Quick Capture
- Batch Scanning
- Mobile Camera

RFID Asset Tracking

Enterprise RFID integration with reader management, tag assignment, automated scanning, and real-time asset location tracking. Monitor online/offline reader status and process scan events.

- RFID Readers
- Tag Management
- Auto-Scan Events
- Reader Status
- Unprocessed Alerts
- Location Tracking

Document Management

Centralized document repository for asset manuals, engineering drawings, geoscience reports, certificates, and warranties with full-text search capabilities.

- Asset Documents
- Drawing Files
- Geoscience Reports
- Search
- Version Control

Maintenance & Work Management

Service Ticket Management

Full helpdesk-style ticketing for asset service requests. Track overdue tickets, assign technicians, and manage resolution workflows with SLA compliance monitoring.

- Ticket Creation
- Priority Levels
- Overdue Tracking
- Technician Assignment
- Resolution History

Work Order Management

Plan, schedule, and execute maintenance work orders. Link work orders to assets, track labor and materials, and monitor completion status across all operational sites.

- Work Order Creation
- Scheduling
- Labor Tracking
- Material Usage
- Status Workflows

The screenshot shows the BizSync360 interface for Service Tickets & Work Orders. It features two main sections: 'OPEN SERVICE TICKETS' and 'WORK ORDER STATUS'. The 'OPEN SERVICE TICKETS' section lists four tickets: TKT-0892 (HVAC malfunction, Critical), TKT-0893 (Elevator inspection, High), TKT-0894 (Server cooling, Medium), and TKT-0895 (Light replacement, Low). The 'WORK ORDER STATUS' section shows a horizontal bar chart with four categories: In Progress (blue), Scheduled (orange), Completed (green), and Overdue (red). The 'Completed' bar is the longest, followed by 'In Progress', 'Scheduled', and 'Overdue'.

Service Tickets & Work Orders — Complete maintenance workflow management

AI-Powered Predictive Maintenance

Leverage machine learning algorithms to predict asset failures before they occur. Health score calculations, failure prediction engine, and intelligent maintenance scheduling reduce downtime.

- Health Score Engine
- Failure Predictions
- Maintenance Rules
- Auto-Scheduling
- Risk Assessment
- Cost Optimization

SLA & Compliance Management

Define and monitor Service Level Agreements with automated escalation rules. Track SLA breaches, compliance frameworks, and regulatory requirements across your asset portfolio.

- SLA Policies
- Breach Monitoring
- Auto-Escalation
- Compliance Frameworks
- Evidence Management

Financial Management & Smart Monitoring

Depreciation & Financial Tracking

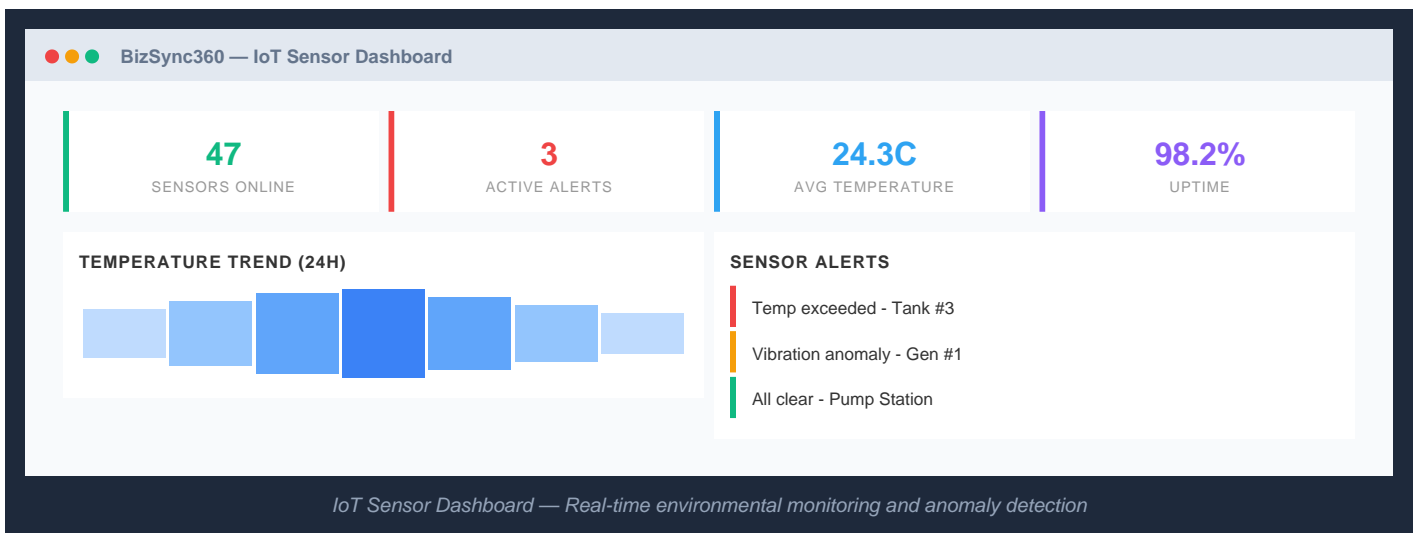
Automated depreciation calculations supporting straight-line, reducing balance, and units of production methods. Generate schedules, track book values, and produce financial reports for auditing and tax compliance.

- Auto-Calculation
- Multiple Methods
- Schedule Generation
- Book Value Tracking
- Tax Compliance

Tariffs & Asset Valuation

Configure tariff rates and calculate asset values based on configurable rate structures. Bulk valuation calculations for portfolio-wide assessments and insurance valuations.

- Tariff Configuration
- Rate Management
- Bulk Calculations
- Insurance Valuations
- Market Values



IoT Sensor Integration

Connect and monitor IoT sensors across your asset network. Real-time data collection, anomaly detection, environmental monitoring, and automated alert generation.

- Sensor Management
- Real-time Data
- Anomaly Detection
- Alert Engine
- API Integration
- Historical Trends

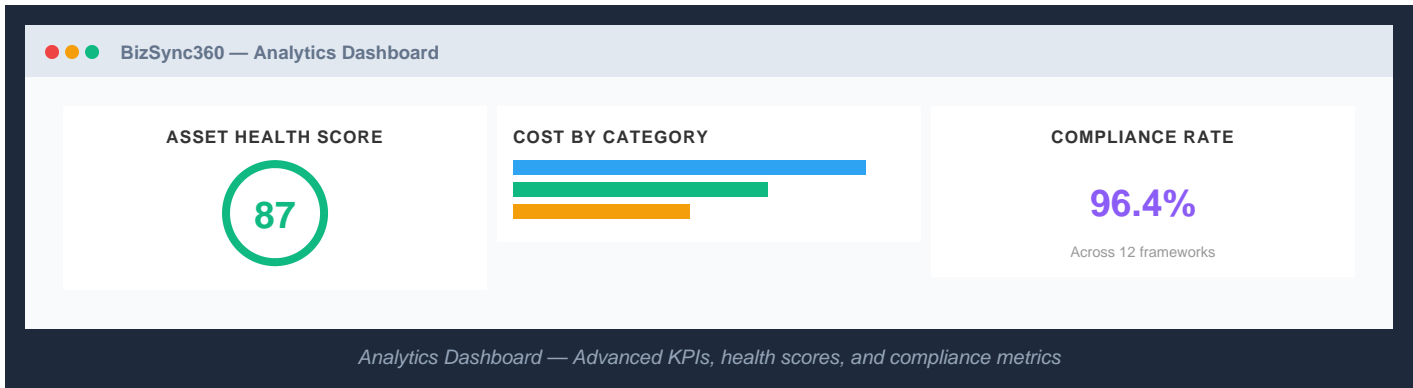
Storage Tank Monitoring

Specialized module for liquid storage management with level readings, consumption tracking, and AI-powered reorder recommendations to prevent stockouts.

- Level Monitoring
- Consumption Analytics
- AI Reorder
- Usage Forecasting
- Multi-Tank

Additional Modules & Integrations

A Asset Audits Schedule and conduct physical asset audits. Mobile audit support, item-by-item verification, discrepancy tracking, and comprehensive audit reports.	L Leases & Loans Manage asset leases, loan agreements, and rental contracts. Track lease terms, payment schedules, and renewal dates automatically.
S Stock & Inventory Spare parts and consumables management with stock levels, reorder points, low stock alerts, and full transaction history.	R Reports & Analytics Advanced reporting engine with customizable dashboards, KPI tracking, trend analysis, and exports in Excel, PDF, CSV formats.
D Document Vault Centralized repository for manuals, drawings, geoscience reports, certificates, and warranties with full-text search.	I Import & Export Bulk data import from Excel/CSV and comprehensive export capabilities. Migrate data easily from legacy systems.
E ERP Integration Connect with SAP, Oracle, Microsoft Dynamics. Bi-directional data sync, field mapping, and sync log monitoring.	M Mobile App (PWA) Progressive Web App for field workers. Offline capability, mobile scanning, ticket creation from any device.
T Multi-Tenant Serve multiple organizations from a single instance. Data isolation, per-tenant branding, site management, CMS.	C Audit & Compliance Full audit trail for every asset action. Compliance reporting, asset history tracking, evidence management.



Architecture & Technology

Platform Architecture

Symfony Framework

Enterprise-grade PHP for reliability, security, and scalability.

RESTful API Platform

Full API Platform integration for third-party and mobile integrations.

Multi-Tenant Isolation

Doctrine ORM with tenant-scoped data filtering for secure isolation.

Progressive Web App

Offline-capable mobile experience with service worker support.

Workflow Engine

Configurable approval and status flows via Symfony Workflow.

Key Capabilities

AI & Machine Learning

Predictive maintenance, anomaly detection, intelligent recommendations.

IoT Ready

Native sensor data collection, real-time monitoring, alert automation.

Enterprise Security

Role-based access control, audit logging, Symfony Security.

Scalable Infrastructure

Cloud-ready with Docker support, message queues, and caching.

Data Intelligence

Advanced analytics, custom dashboards, and exportable reports.

Ready to Transform Your Asset Management?

Join leading enterprises that trust BizSync360 to manage their critical assets.
Contact us for a personalized demo and see the difference.

[Schedule Your Demo Today](#)

Email

info@bizsync360.com

Website

www.bizsync360.com

Support

support@bizsync360.com

AUTHORISED PARTNER DISCLAIMER

Godlo Accountants are an authorised partner for BizSync360 Asset Management Software. Godlo Accountants are licensed to distribute, implement, configure, and provide support services for the BizSync360 Enterprise Asset Management platform. All product features, specifications, and capabilities described in this brochure are subject to the terms and conditions of the BizSync360 software license agreement. BizSync360 is a registered trademark. For partnership enquiries or to verify authorised partner status, please contact BizSync360 directly. Godlo Accountants operate independently and are solely responsible for the services they provide in connection with the BizSync360 platform.